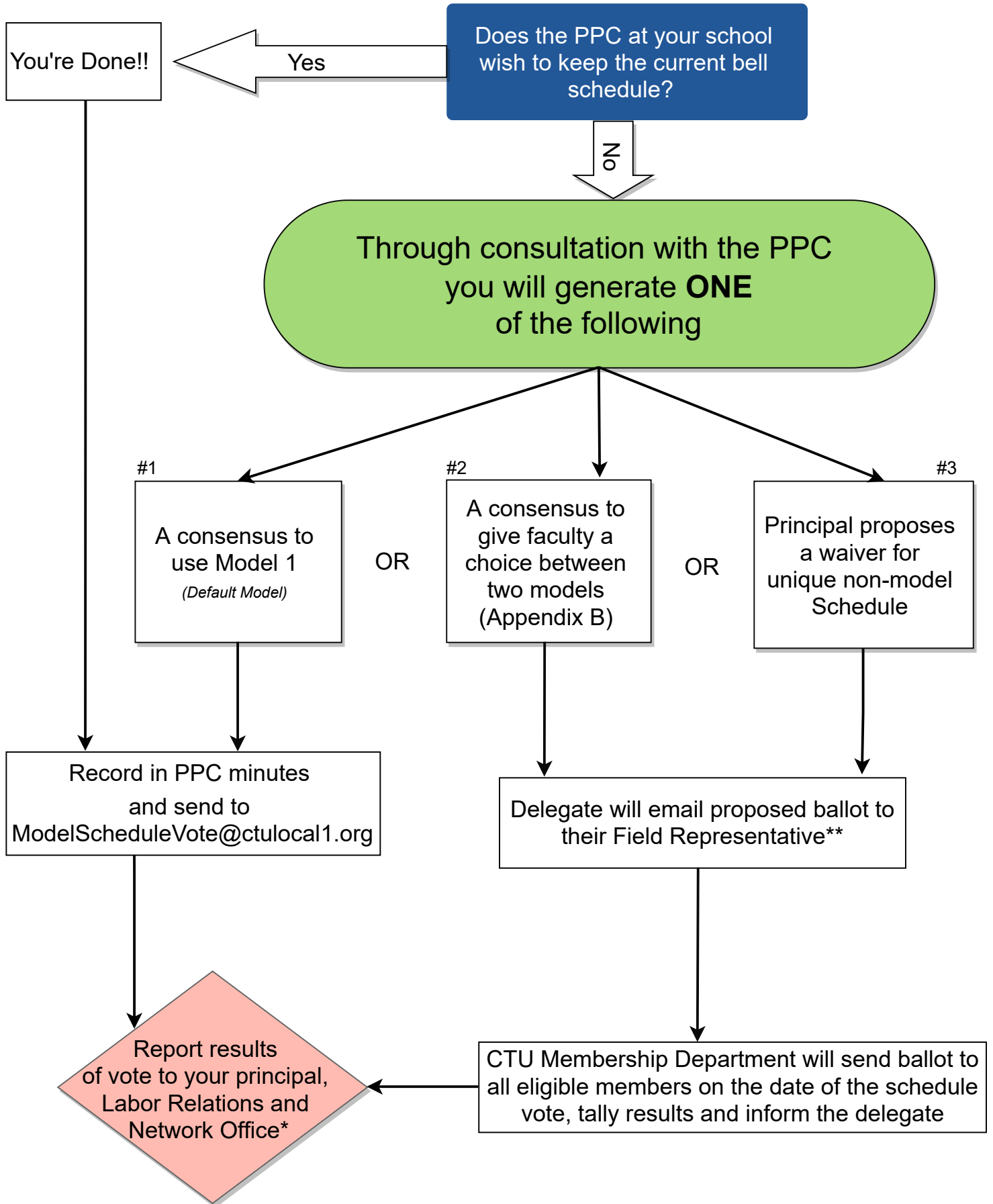


# 2021-2022 Model Schedule Procedures



\* Send the completed certification, ballot and schedule to your network office as well as CPS Labor Relations at [laborrelationshs@cps.edu](mailto:laborrelationshs@cps.edu) (High Schools) or [laborrelationses@cps.edu](mailto:laborrelationses@cps.edu) (Elementary Schools)

\*\* If you are conducting a waiver vote, and the waiver fails, If waiver vote fails, then school must adopt Model 1 Schedule