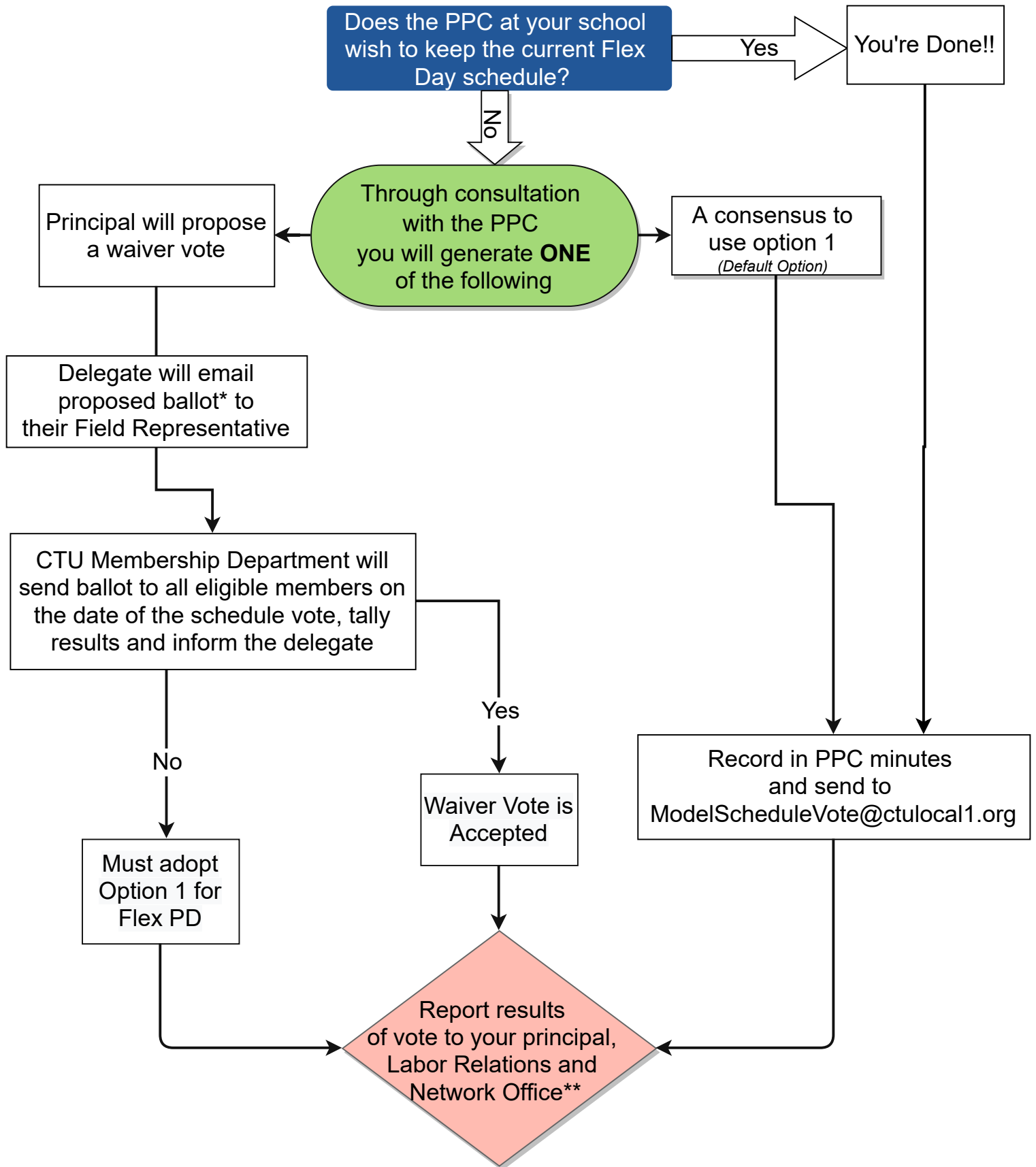


# 2021-2022 Flex PD Day Vote Procedures



\* A waiver vote must include the dates (a calendar) when flex PD's are going to be used.

\*\* Send the completed certification, ballot and schedule to your network office as well as CPS Labor Relations at [laborrelationshs@cps.edu](mailto:laborrelationshs@cps.edu) (High Schools) or [laborrelationses@cps.edu](mailto:laborrelationses@cps.edu) (Elementary Schools)