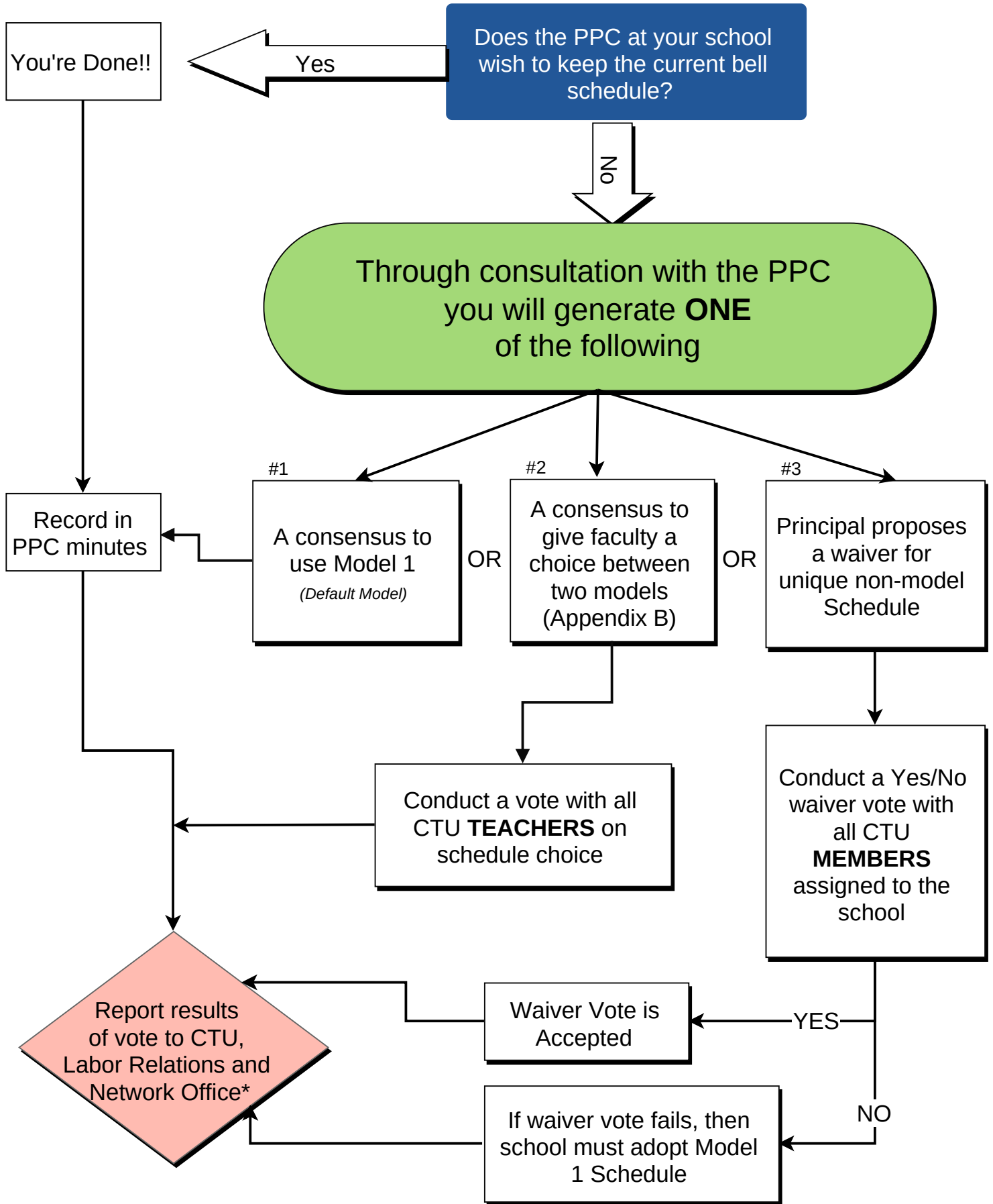


# 2020-2021 Model Schedule Procedures



\* The completed certification, ballot and schedule must be sent to CTU at [ModelScheduleVote@ctulocal1.org](mailto:ModelScheduleVote@ctulocal1.org) as well as Board's Office of Labor Relations at [laborrelationshs@cps.edu](mailto:laborrelationshs@cps.edu) (High Schools) or [laborrelationses@cps.edu](mailto:laborrelationses@cps.edu) (Elementary Schools) and your Network Office.